



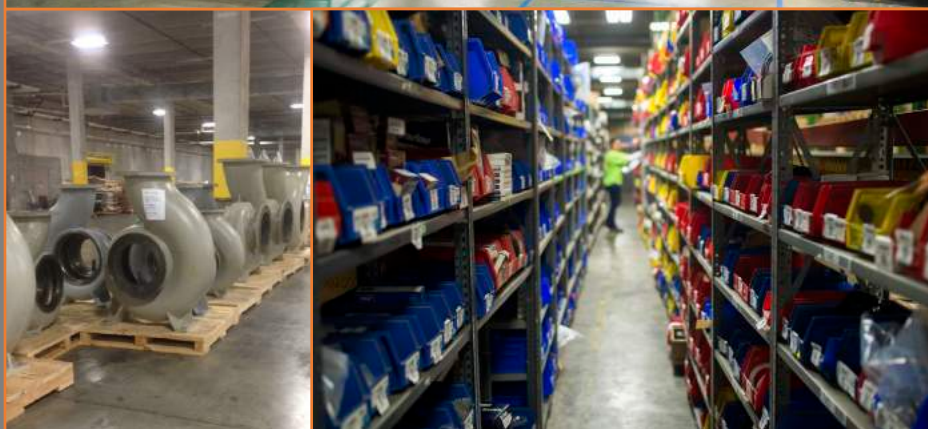
SUNLAND
LOGISTICS SOLUTIONS

We help our customers
do what they do...Better!



OPERATION SNAPSHOT

INDUSTRIAL CUSTOMER



- **Number of SKUs:** 8,000+
- **Number of orders / day:** 70 parcels and 35 LTL per day
- **Number of pieces shipped / day:** Orders average 3 pieces (about 250 line items per day) – (some orders for 1 piece and some large orders have hundreds)
- **Number of inbounds or pieces received per day:** Receive about 8-10 parcels in per day and about 4 sea containers per week
- **How much square footage:** Currently using 30,000 SF
- **Number of people working in the area:** 11 operation associates and 2 admin/management
 - Receiving
 - Shipping
 - Order filling
 - Packaging
 - Returns
 - Inventory management

